

Arm
4 x zuschneiden

Gesicht
1 x zuschneiden

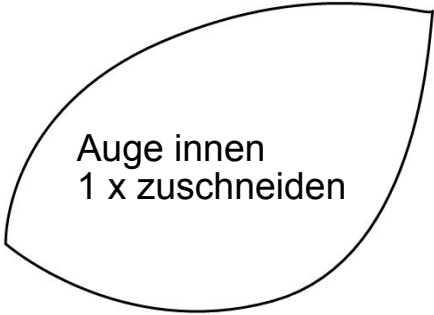
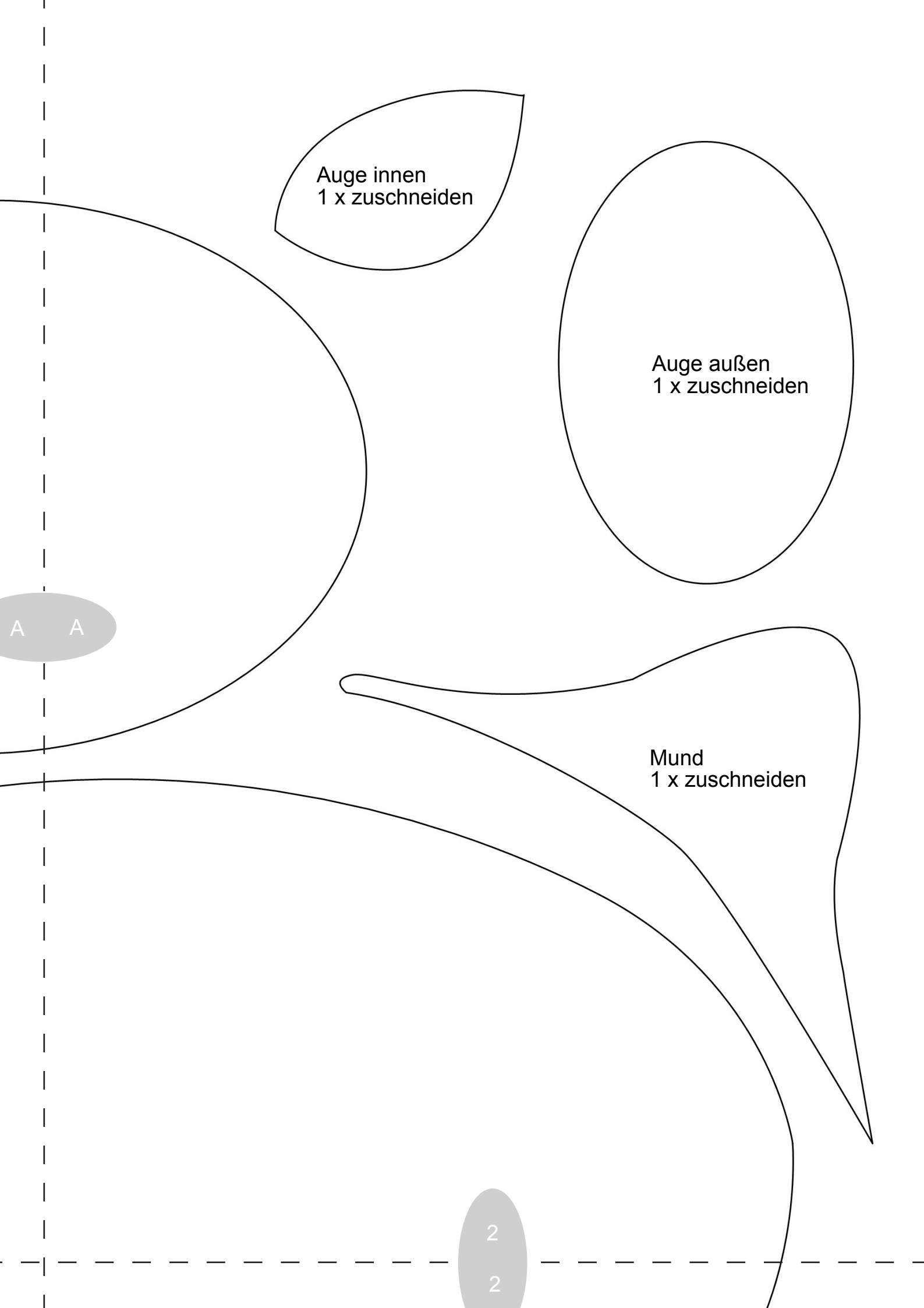
Horn
4 x zuschneiden

A

A

1

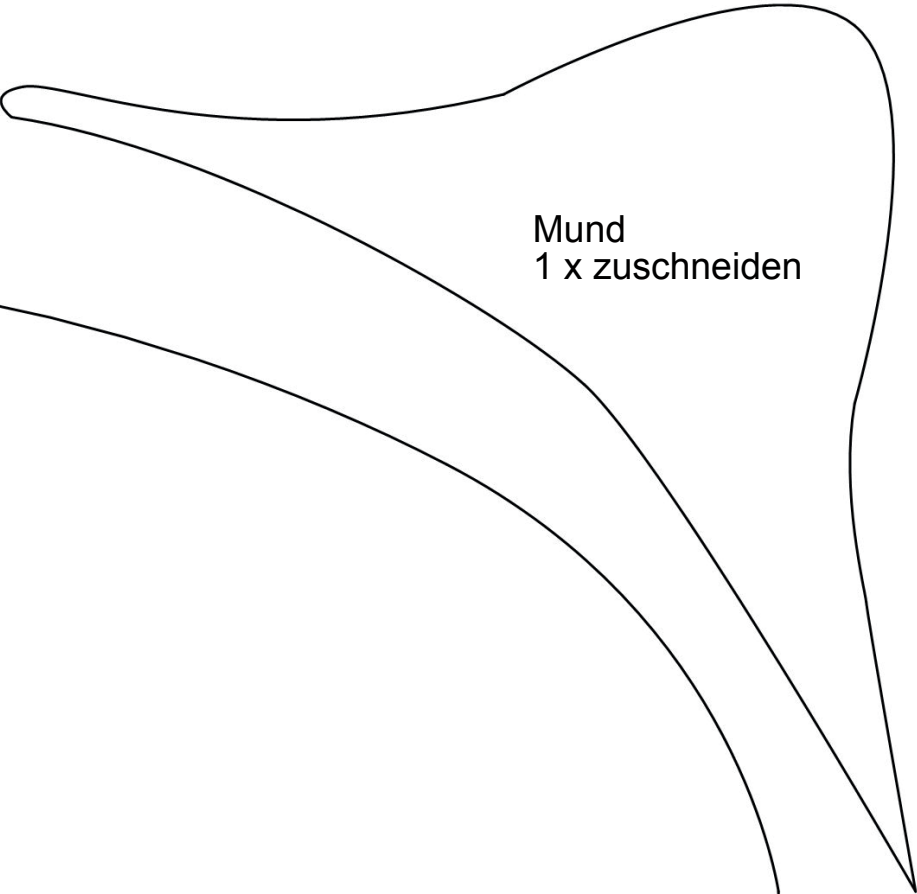
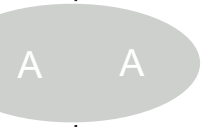
1



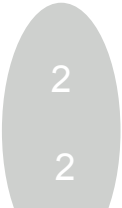
Auge innen
1 x zuschneiden

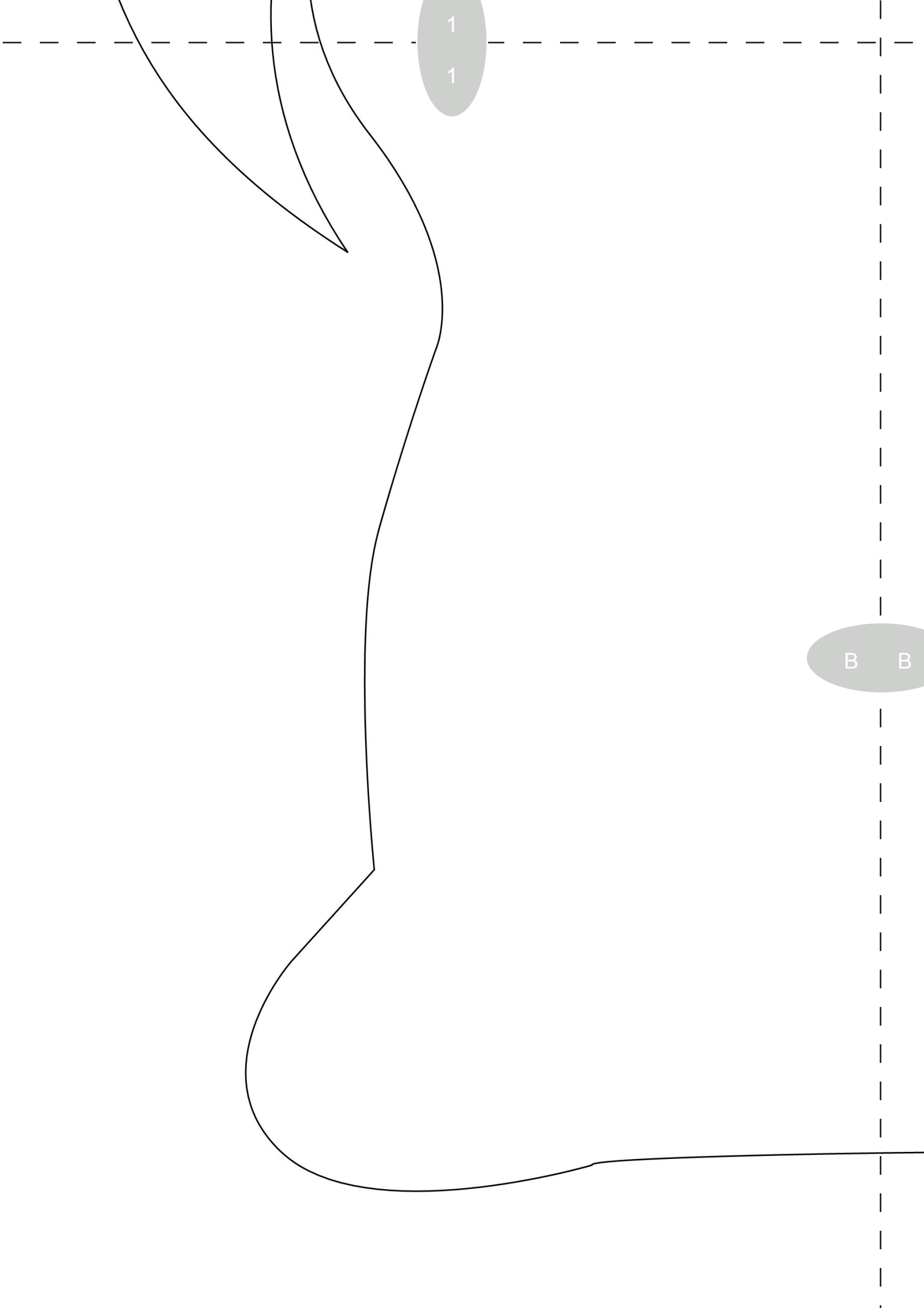


Auge außen
1 x zuschneiden



Mund
1 x zuschneiden





1

1

B

B

2

2



Körper
2 x zuschneiden

B

B